



# Oracle® Applications 11.5.10CU2 with NLS 32 Bit virtual machine Installation + user manual

Author			
Company	Name	Date	Description
ICT-OKE BV	Hans Schoonen	24-01-2008	

Reviewer			
Company	Name	Date	Approval
Altasen BV	Roel Hogendoorn	24-01-2008	

## Overview

This document describes the installation process for the prepared Oracle® Applications 11.5.10CU2 with NLS virtual machine, which can be used for evaluation purposes.

The installation is divided into the following parts:

<u>Overview.....</u>	<u>2</u>
<u>1 Hardware requirements.....</u>	<u>2</u>
<u>2 Software.....</u>	<u>2</u>
<u>3 Installation of the Vmware server.....</u>	<u>2</u>
<u>4 Usernames and Passwords.....</u>	<u>4</u>
<u>5 Startup / shutdown the system.....</u>	<u>5</u>
<u>6 Oracle EBS documentation.....</u>	<u>13</u>
<u>7 TNSNAMES.....</u>	<u>14</u>

### 1 Hardware requirements

Processor:	Recommended is a dual core processor, although it will work on a single processor
Memory:	Minimum of 3 GB
Network:	The installation has been successfully done on a Dell, Acer and a Compaq 6710B
Storage:	250GB disk space.  An external USB2 – or Fire wire hard disk is recommended. NOTE:I received errors with fire wire 800. When I switched back to USB2 or fire wire 400 on the same disk, those problems where gone.

### 2 Software

Host OS:	The host system (which is installed on your PC or server) can be Windows (XP, Vista, 2000, 2003) or Linux
OS:	The pre-installed “package” which can be requested via <a href="http://www.ict-oke.com">www.ict-oke.com</a> or <a href="http://www.altasen.com">www.altasen.com</a> .
VMware	The server version is downloadable, and free (see section 3 for more info)
EBS Rel. 11.5.10CU2	The pre-installed “package” which can be requested via <a href="http://www.ict-oke.com">www.ict-oke.com</a> or <a href="http://www.altasen.com">www.altasen.com</a> .

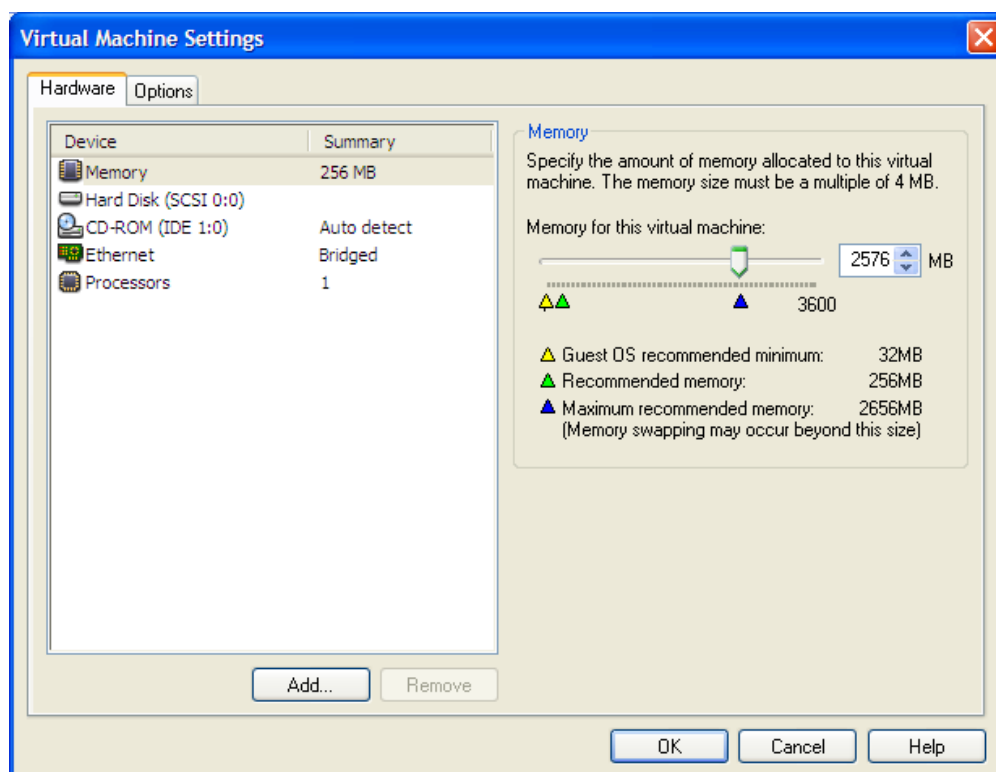
### 3 Installation of the Vmware server

Download and install the VMware server from <http://www.vmware.com/download/server/>  
For being able to use it, you will need to register for your free serial number(s).

From the VMware Server Console you can create a connection to the package:

## 11.5.10CU2 + NLS Dutch Usermanual

File → open → **Name of the directory where apps is installed**



***Check if your memory is OK***

***Add the following line to the “hosts” file:***

192.168.2.10 vision vision.release11510.com

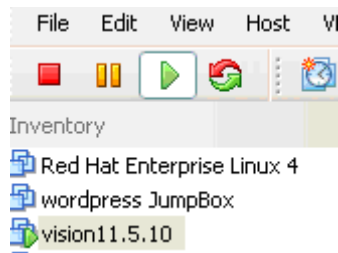
Location of this file: C:\Windows\system32\drivers\etc

## 4 Usernames and Passwords

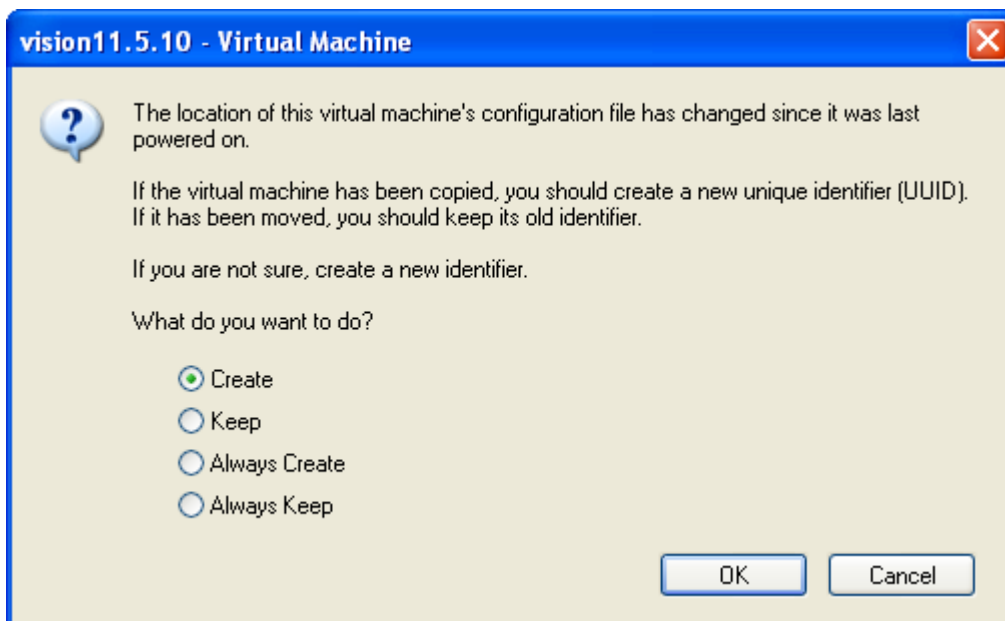
Account name	Password
<b>OS accounts</b>	
oracle	oracle
root	vision123
<b>Operation Unit Accounts for the vision demo application</b>	
Vision Operations	apps/apps
Vision Corporation	apps/apps
Vision Industries	apps/apps
Vision Services	apps/apps
Vision Project Manufacturing	apps/apps
Vision ADB	apps/apps
<b>Apps accounts for the vision demo application</b>	
SYSADMIN	sysadmin
MFG	welcome
OPERATIONS	welcome
SERVICES	welcome
MRC	welcome
HRMS	welcome
<b>Database accounts</b>	
sys	manager
system	manager
apps	apps

## 5 Startup / shutdown the system

*Start the virtual machine:*



Press the green “start this virtual machine” button.



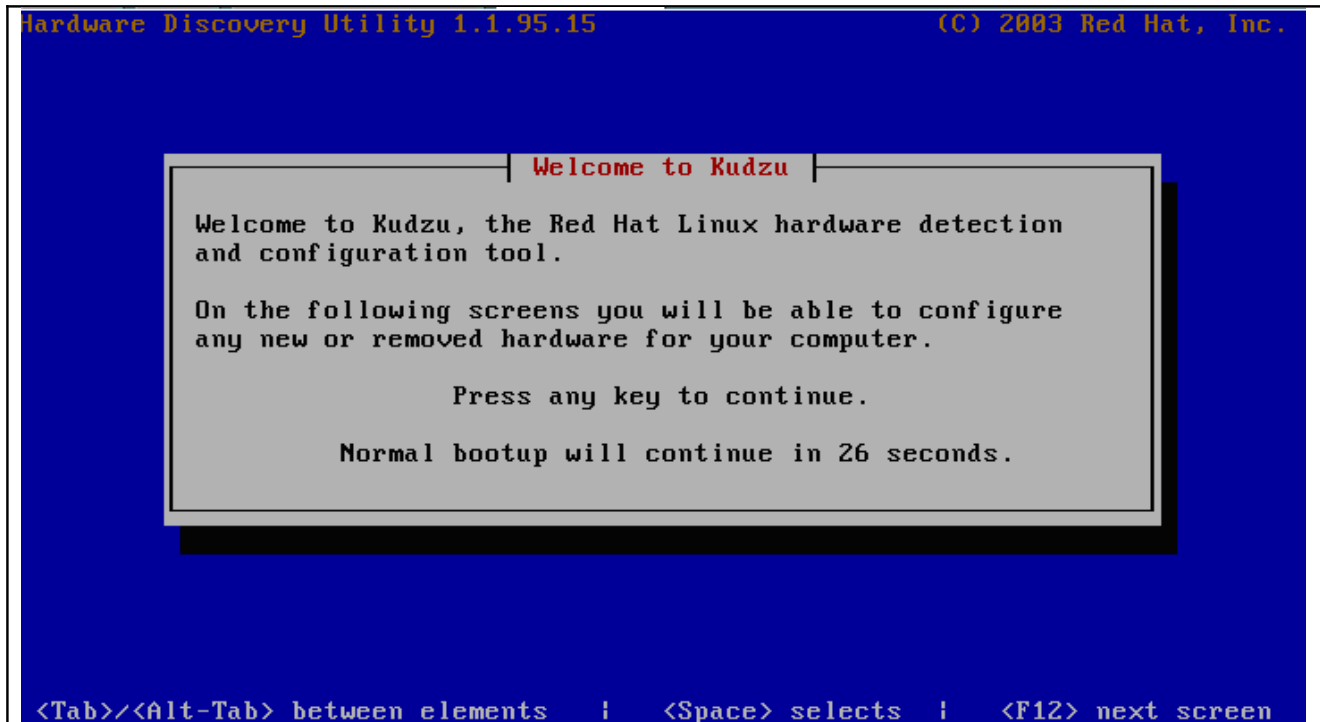
When starting up for the first time, a pop-up will arise.

Select “Create” and proceed

(This screen does not always pop up; if you do not see it, don't worry)

During the start-up sometimes a new network device will be detected.  
If such is the case, then click into the screen, and press enter.

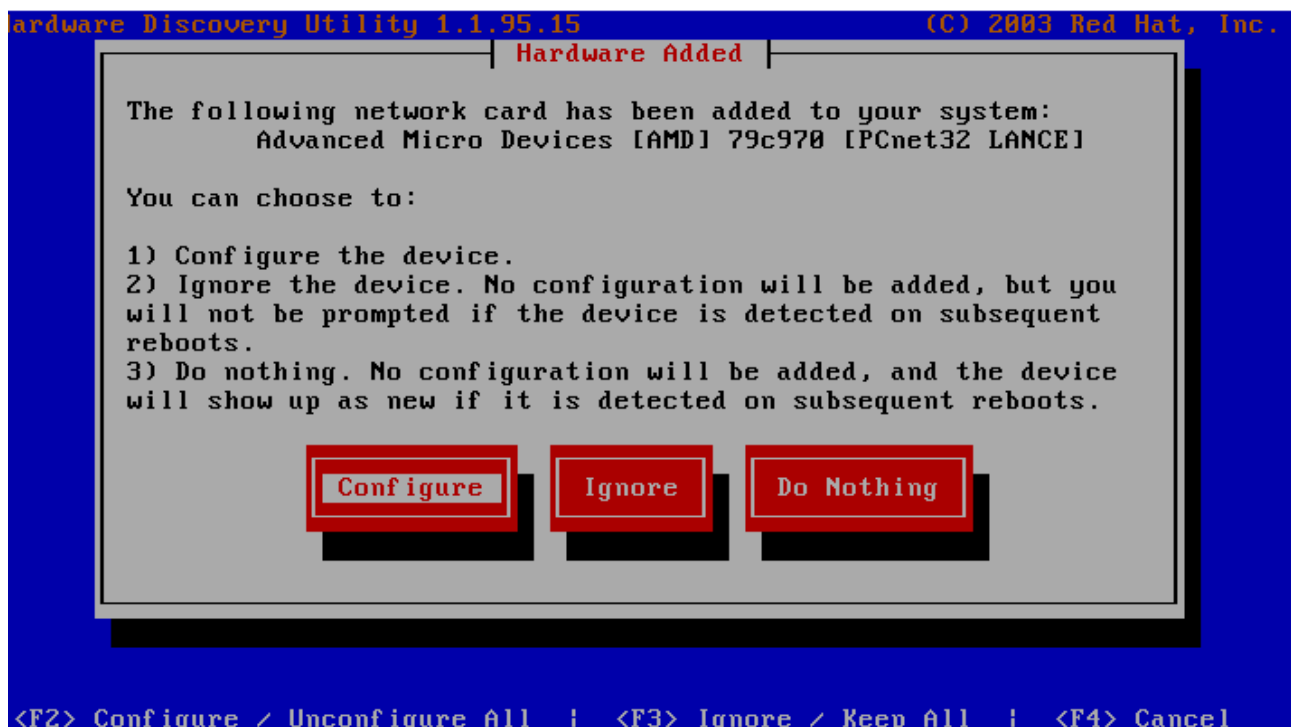
11.5.10CU2 + NLS Dutch  
Usermanual

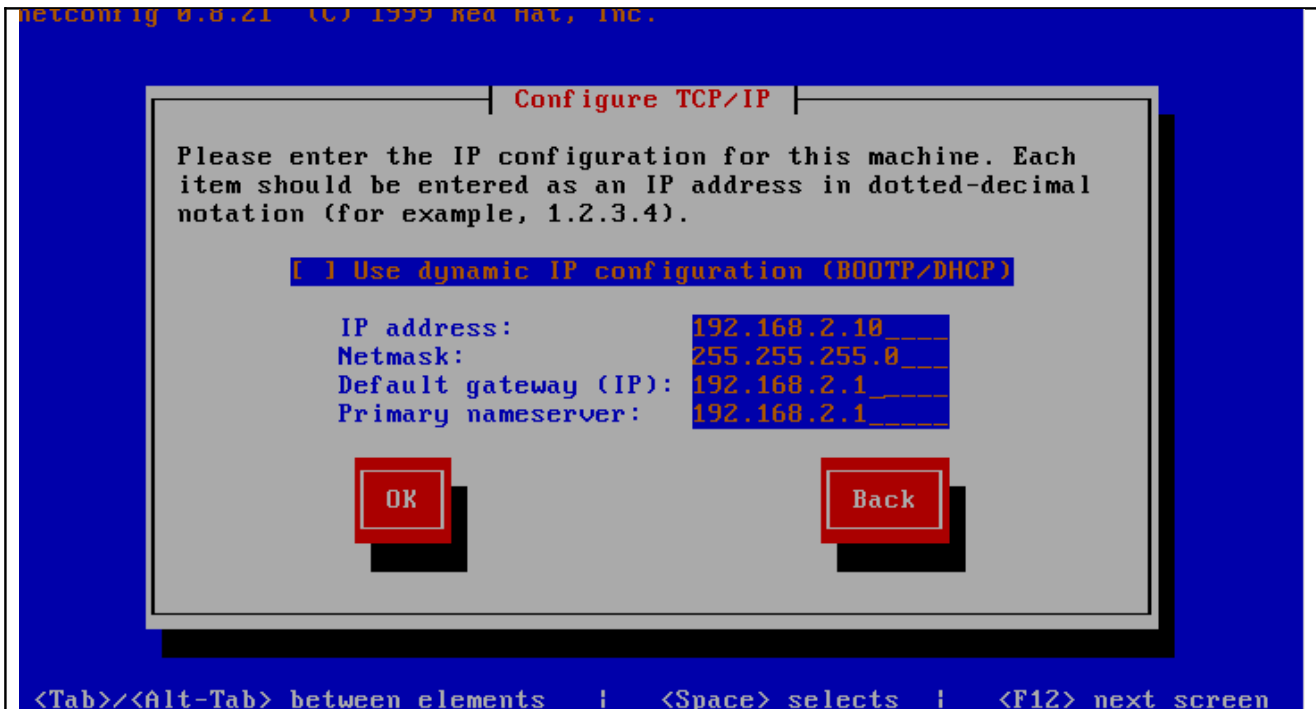


Hereafter select the Remove button:



Next press configure:





.....and use the parameters as described in the screenshot.

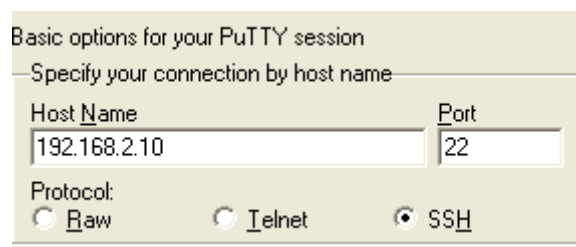
Of course you are free to choose a free ip address in your network.

If this is the case, you can configure the parameters in such a way that it is suitable for your environment. Don't forget to use the same ip address in your host file (As described in Section 3, installation of the VM-ware server.)

If – for some reason – this did not work well, then you must switch to the x-environment to adjust the network parameters.(See **section 8:Network settings in the X environment** for the details).

### ***Open a Linux shell:***

You can either log onto the VMware console, or use a program which is able to setup an ssh connection (like putty). Putty is free. It can be downloaded via <http://putty.en.softonic.com/>



### ***Log into the system and change the directory to the scripts directory:***

```
login as: oracle
Sent username "oracle"
oracle@192.168.2.10's password:oracle
Last login: Tue Jan 22 21:25:01 2008
[oracle@vision ~]$
```

11.5.10CU2 + NLS Dutch  
Usermanual

**Check if you are in the right directory:**

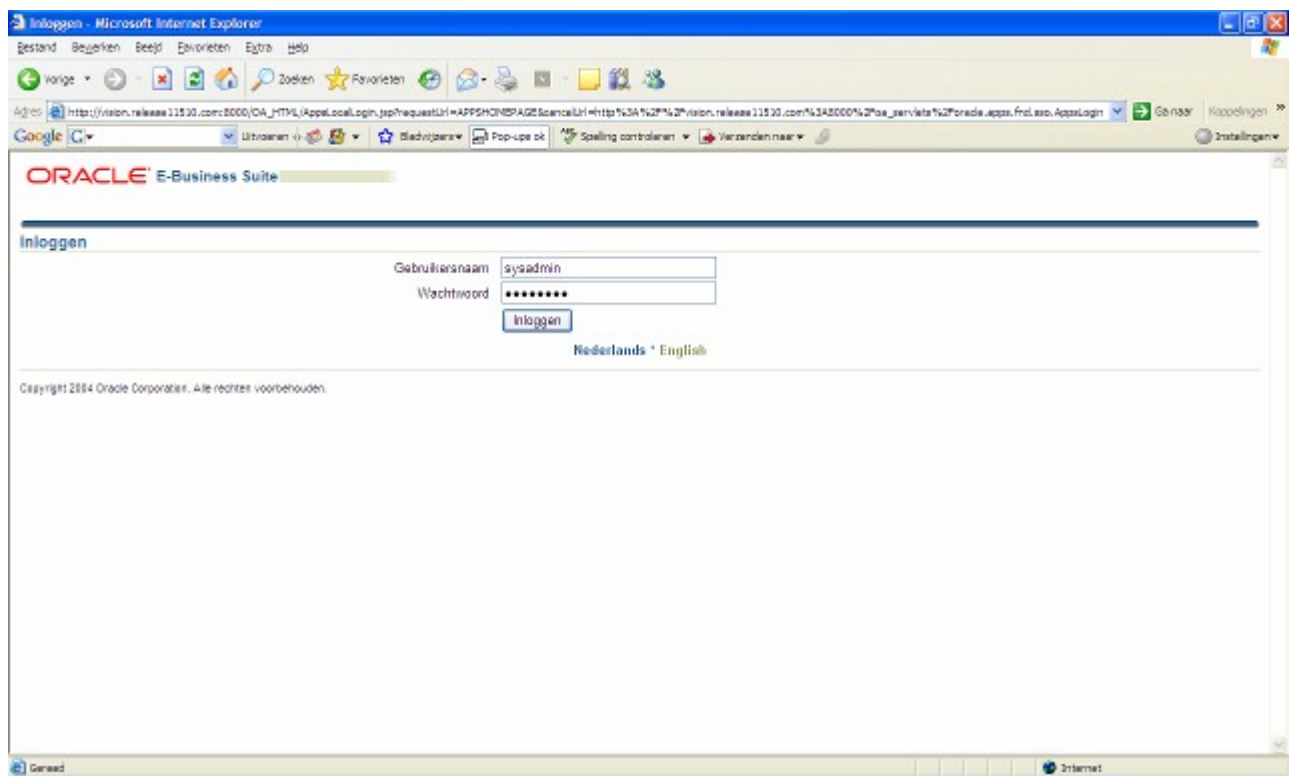
```
[oracle@vision ~]$ pwd  
/home/oracle
```

**Start APPS:**

```
[oracle@vision scripts]$ ./start_all.sh
```

NOTE: This will start the database and the application tier

**Login to the application:**



Use the url: <http://vision.release11510.com:8000> in a web browser, and you will receive the welcome screen. (This can take a few minutes, when you start-up for the first time after a shutdown)

Use sysadmin / sysadmin (or one of the other logins; see section 4 “username and passwords”)

**Stop APPS:**

```
[oracle@vision scripts]$ ./stop_all.sh
```

NOTE: This will stop the application tier first followed by the database.

It will take some time before the concurrent managers are stopped, and before the database has been stopped.

If the database does not shutdown, (i.e. the database is still shutting down after 15 minutes) follow next step “Stop the database forced”.

**Stop the database forced:**

*Load the right environment:*

```
[oracle@vision]
```



11.5.10CU2 + NLS Dutch  
Usermanual

```
[oracle@vision]$ . VIS_vision.env  
[oracle@vision]$ sqlplus
```

SQL\*Plus: Release .....

```
Enter user-name: / as sysdba  
Connected to:....  
SQL> shutdown abort
```

```
SQL> startup restrict
```

```
SQL> shutdown immediate
```

If the database has been stopped you can shutdown the operation system, as described in the following section:”shutdown the operation system”

***Shutdown the operation system:***

Become super user first:

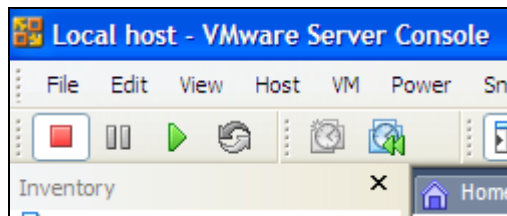
```
$ su
```

```
password:vision123
```

give the shutdown command:

```
#!/sbin/shutdown -h now
```

***Stop VMware:***



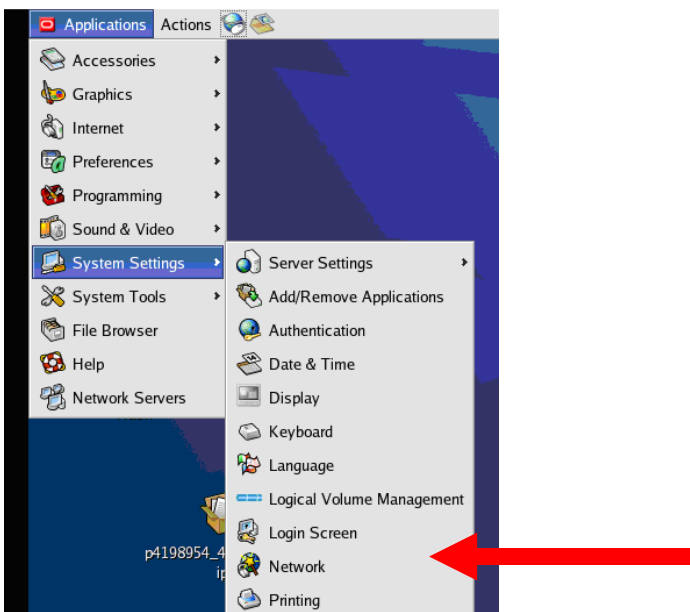
**Press the RED stop button**

## 6 Network settings in the X environment

```
Enterprise Linux Enterprise Linux AS release 4 (October Update 4)  
Kernel 2.6.9-42.0.0.1.EL on an i686  
  
vision login: root  
Password:  
Last login: Sun Feb  3 12:08:08 on tty1  
You have new mail.  
[root@vision ~]# startx_
```

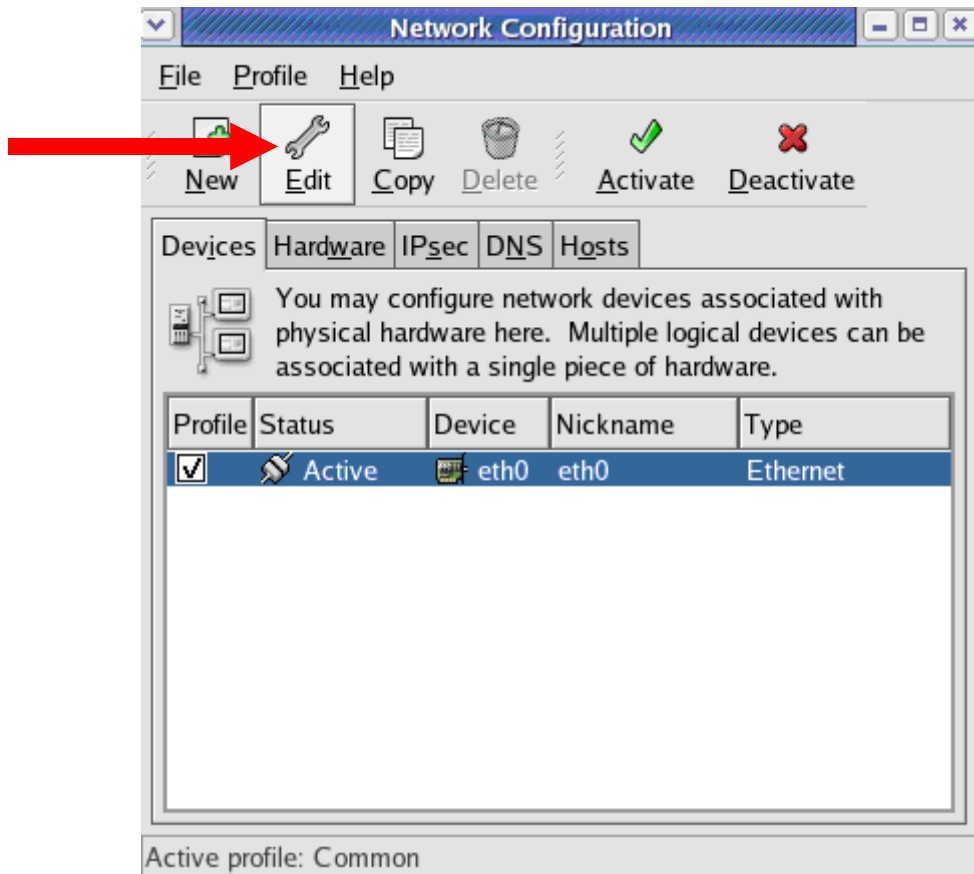
Login as root

The X environment can be started by entering “startx”

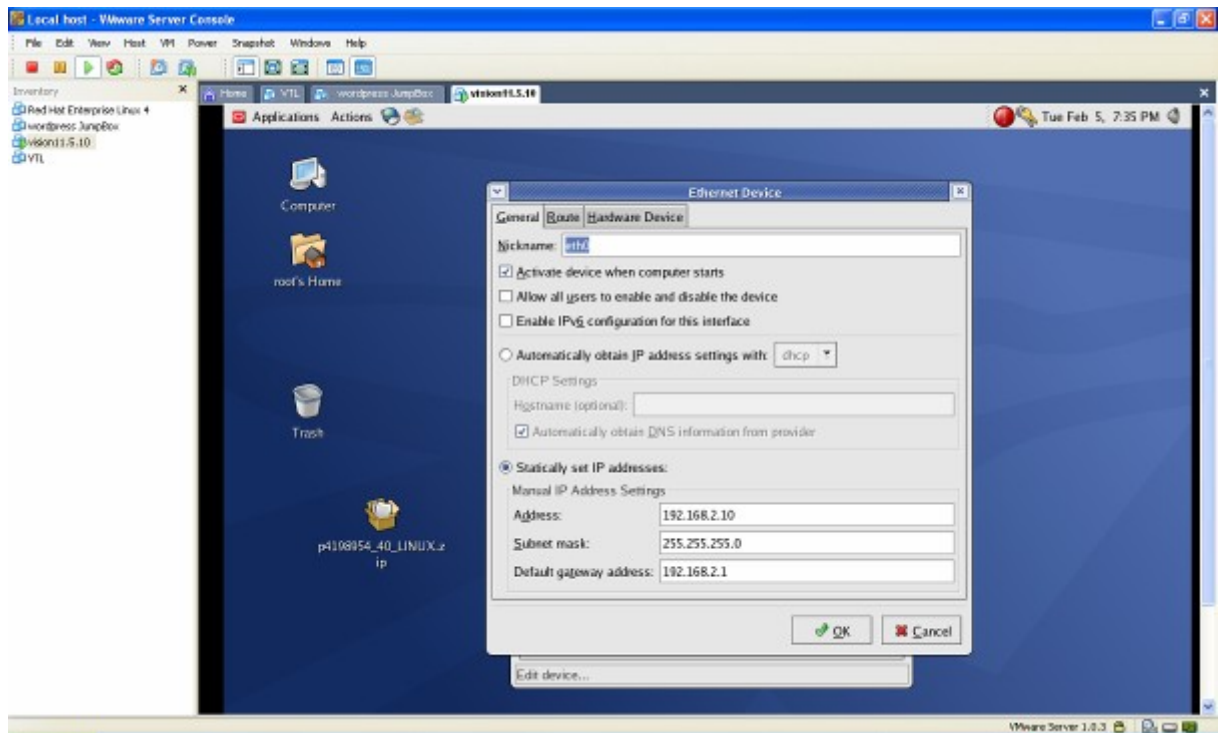


Select Network

## 11.5.10CU2 + NLS Dutch Usermanual

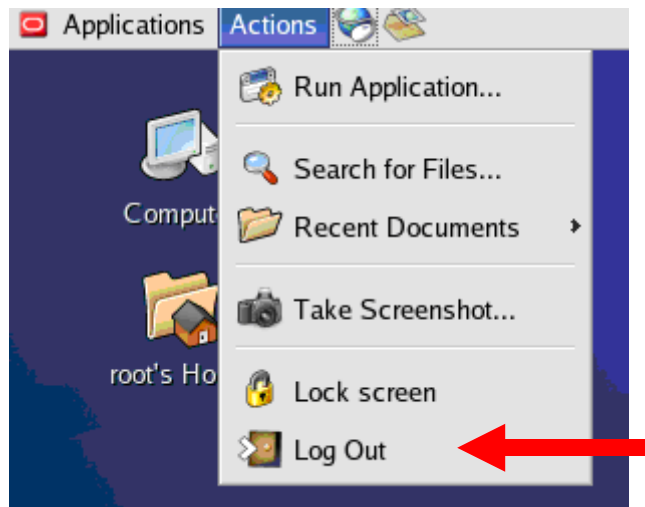


Select Edit, and configure the IP address:



## 11.5.10CU2 + NLS Dutch Usermanual

Note: If you receive a warning about incorrect MAC address settings, then the hardware TAB needs to be used. Choose “Probe”, which will determine your MAC address.



Leave the X environment, by pressing the logout button.

---

## 7 Oracle EBS documentation

The Oracle EBS documentation can be found on: [download.oracle.com](http://download.oracle.com)

Some interesting technical documents are listed below:

### Technology

#### Maintenance

<a href="#"><u>Installing Oracle Applications: A Guide to Using Rapid Install</u></a>	B19296-01
<a href="#"><u>Maintaining Oracle Applications Documentation Set</u></a>	B19298-01
<a href="#"><u>Oracle Applications Maintenance Procedures</u></a>	B19299-01
<a href="#"><u>Oracle Applications Maintenance Utilities</u></a>	B19300-01
<a href="#"><u>Oracle Applications Concepts</u></a>	B19295-01
<a href="#"><u>Upgrade Assistant Spreadsheet</u></a>	NA
<a href="#"><u>Upgrading Oracle Applications (zipped)</u></a>	B19297-01

#### Architecture

<a href="#"><u>Multiple Organizations in Oracle Applications</u></a>	A81174-02
<a href="#"><u>Oracle Applications Flexfields Guide</u></a>	A75393-04
<a href="#"><u>Oracle Trading Community Architecture Administration Guide</u></a>	B10854-04
<a href="#"><u>Oracle Trading Community Architecture Reference Guide</u></a>	B12311-03
<a href="#"><u>Oracle Trading Community Architecture Technical Implementation Guide</u></a>	B13890-03
<a href="#"><u>Oracle Trading Community Architecture User Guide</u></a>	B12310-03
<a href="#"><u>Oracle XML Publisher User's Guide</u></a>	B13817-02

#### Reference

<a href="#"><u>Oracle Applications System Administrator's Documentation Set</u></a>	NA
<a href="#"><u>Oracle Applications System Administrator's Guide - Security</u></a>	B13923-02
<a href="#"><u>Oracle Applications System Administrator's Guide - Maintenance</u></a>	B13924-02
<a href="#"><u>Oracle Applications System Administrator's Guide - Configuration (zipped)</u></a>	B13925-03
<a href="#"><u>Oracle Applications Supportability Guide</u></a>	B13548-01
<a href="#"><u>Oracle Applications User's Guide</u></a>	B10935-02

#### Standards

<a href="#"><u>Oracle Applications Developer's Guide</u></a>	A75545-03
<a href="#"><u>Oracle Applications User Interface Standards for Forms-Based Products</u></a>	A75395-01

## **8TNSNAMES**

```
VIS =  
(DESCRIPTION =  
  (ADDRESS =  
    (PROTOCOL = tcp)  
    (HOST = VISION.release11510.com)  
    (PORT = 1521)  
  )  
  (CONNECT_DATA =  
    (SERVICE_NAME = VIS)  
    (INSTANCE_NAME = VIS)  
  )  
)
```

11.5.10CU2 + NLS Dutch  
Usermanual

---

**For more information about our various Oracle Applications services please contact us via:**

<b>ICT-OKE BV</b>	<b>Altasen BV</b>
Van Hovedreef 18 4715 GH Rupchen The Netherlands  <a href="http://www.ict-oke.com">www.ict-oke.com</a> email: <a href="mailto:info@ict-oke.com">info@ict-oke.com</a>	Billitonlaan 4 7314 CP Apeldoorn The Netherlands  <a href="http://www.altasen.com">www.altasen.com</a> email: <a href="mailto:info@altasen.com">info@altasen.com</a>

NOTE: We are able to deliver a completely installed system with the language of your choice on release 11.5.10CU2 or release 12!!.

Siebel 8 for Linux will be available in the near future.

---

**INFORMATION DISCLAIMER**

This document which is available from ICT-OKE.COM does not warrant or assume any legal liability or responsibility for the accuracy, completeness, or usefulness of any information or process disclosed.

Although we intend to keep this information current, we do not promise or guarantee that the information is correct, complete, or up-to-date. While ICT-OKE BV will make every effort to ensure that the information in these pages is accurate, up-to-date and complete, no liability on the part of ICT-OKE BV (or its employees or agents) will be accepted for any inaccuracies.

*The document is published for free as a favor to all colleague Oracle APPS DBA's and Consultants.  
Please do not change the contents of this document without letting us know.*