

APPS Release12 on Vmware (32Bit)
User manual



APPS Release12
on Vmware
(32Bit)
User manual

Author			
Company	Name	Date	Description
ICT-OKE BV	Hans Schoonen	24-01-2008	

Reviewer			
Company	Name	Date	Approval
Altasen BV	Roel Hogendoorn	24-01-2008	

APPS Release12 on Vmware (32Bit)

User manual

Overview

This document describes the installation process for APPS release 12 on Vmware. The installation is divided into the following parts:

<u>Overview.....</u>	<u>2</u>
1.Hardware requirements.....	2
2.Software Requirements.....	2
3.Installation of the Vmware server.....	3
4.Usernames and Passwords.....	4
5.Start / Stop APPS.....	5
6.Oracle EBS documentation.....	9
7.TNSNAMES.....	10
8.Network settings in the X environment.....	11

1. Hardware requirements

Processor:	Recommended is a dual core processor, although it will work on a single processor
Memory:	Minimum of 3 GB
Network:	The installation has been successfully done on a Dell, Acer and a Compaq 6710B
Storage:	250GB disk space. An external USB2 – or Fire wire hard disk is recommended. NOTE:I received errors with fire wire 800. When I switched back to USB2 or fire wire 400 on the same disk, those problems where gone.

2. Software Requirements

Host OS:	The host system (which is installed on your PC or server) can be Windows (XP, Vista, 2000, 2003) or Linux
OS:	The pre-installed “package” which can be requested via www.ict-oke.com or www.altasen.com .
VMware	The server version is downloadable, and free (see section 3 for more info)
EBS Rel. 12	The pre-installed “package” which can be requested via www.ict-oke.com or www.altasen.com .

APPS Release12 on Vmware (32Bit)

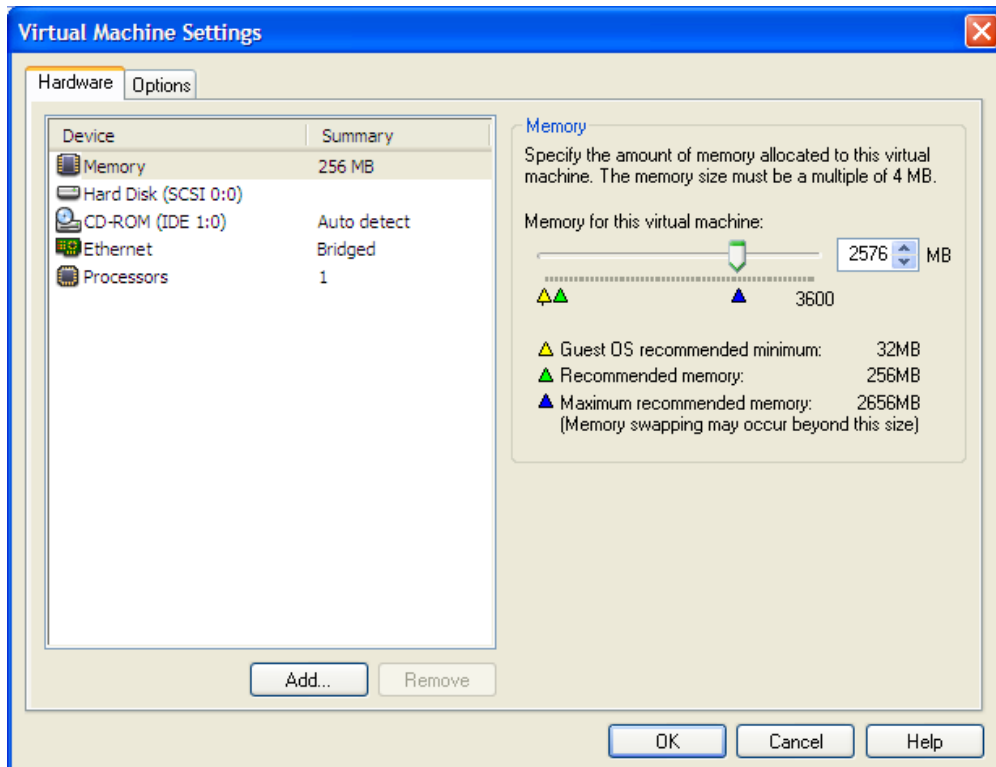
User manual

3. Installation of the Vmware server

Download and install the VMware server from <http://www.vmware.com/download/server/>
For being able to use it, you will need to register for your free serial number(s).

From the VMware Server Console you can create a connection to the package:

File → open → **Name of the directory where apps is installed**



Check if your memory is OK

Add the following line to the "hosts" file:

```
192.168.2.15      vision vision.testinstance.com
```

Location of this file: C:\Windows\system32\drivers\etc

APPS Release12 on Vmware (32Bit)
User manual

4. Usernames and Passwords

Account name	Password
OS accounts	
oracle	oracle1234
root	vision1234
Operation Unit Accounts for the vision demo application	
Vision Operations	apps/apps
Vision Corporation	apps/apps
Vision Industries	apps/apps
Vision Services	apps/apps
Vision Project Manufacturing	apps/apps
Vision ADB	apps/apps
Apps accounts for the vision demo application	
SYSADMIN	sysadmin
MFG	welcome
OPERATIONS	welcome
SERVICES	welcome
MRC	welcome
HRMS	welcome
Database accounts	
sys	manager
system	manager

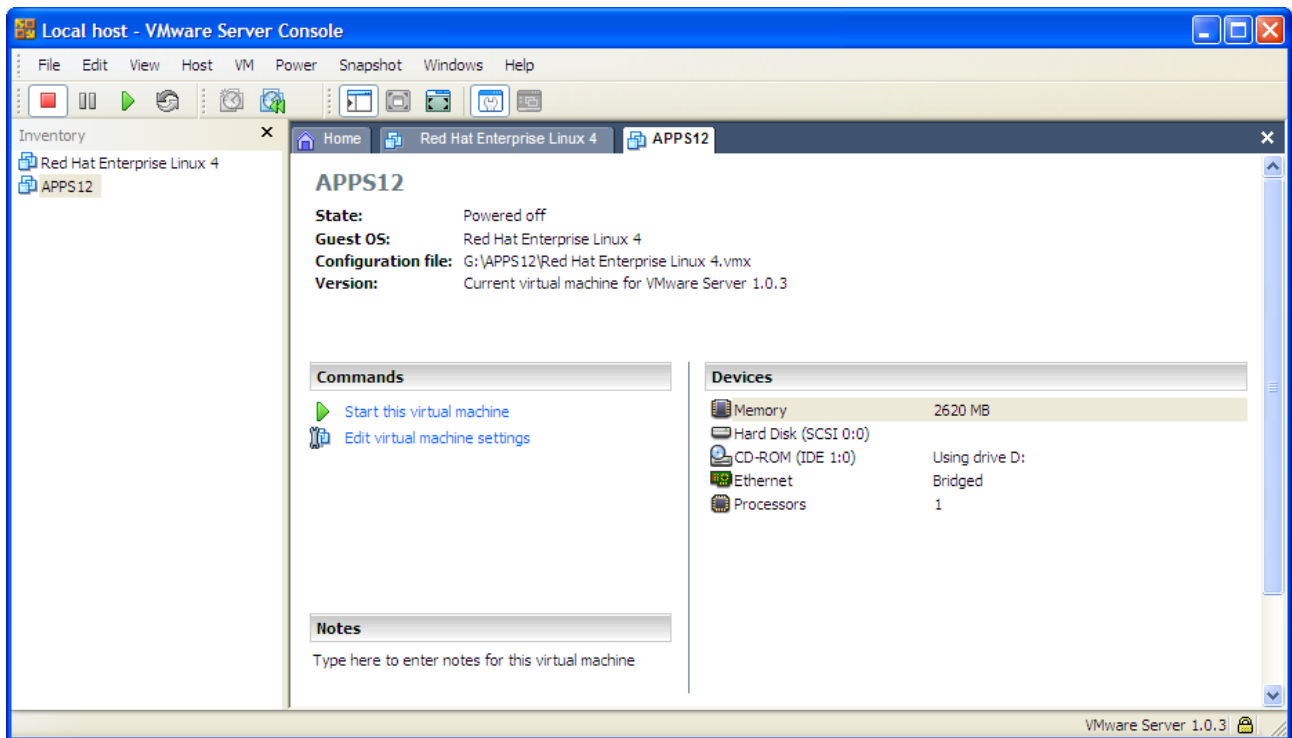
Usernames and Passwords

APPS Release12 on Vmware (32Bit)

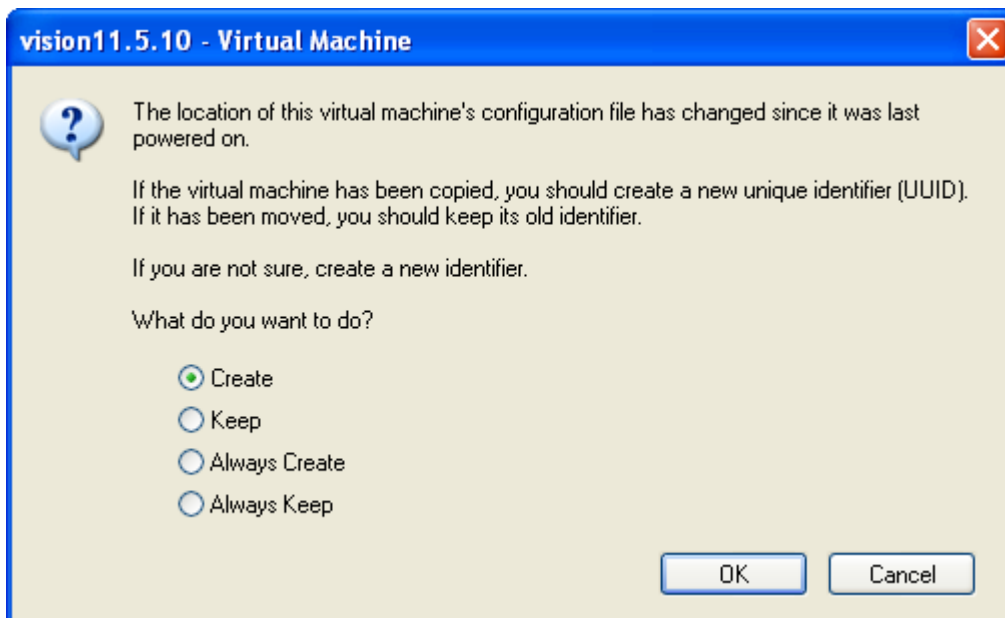
User manual

5. Start / Stop APPS

Start the virtual machine:



Press the green “start this virtual machine” button.



When starting up for the first time, a pop-up will arise.

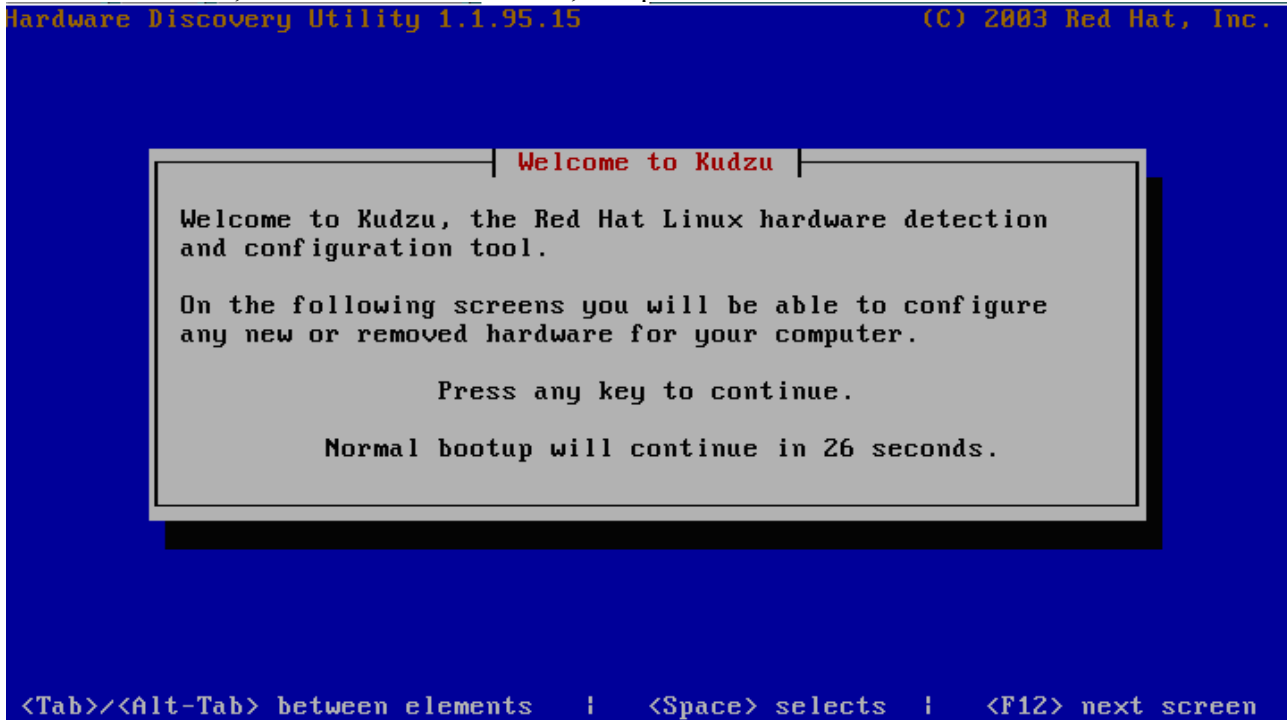
Select “Create” and proceed

(This screen does not always pop up; if you do not see it, don't worry)

APPS Release12 on Vmware (32Bit)

User manual

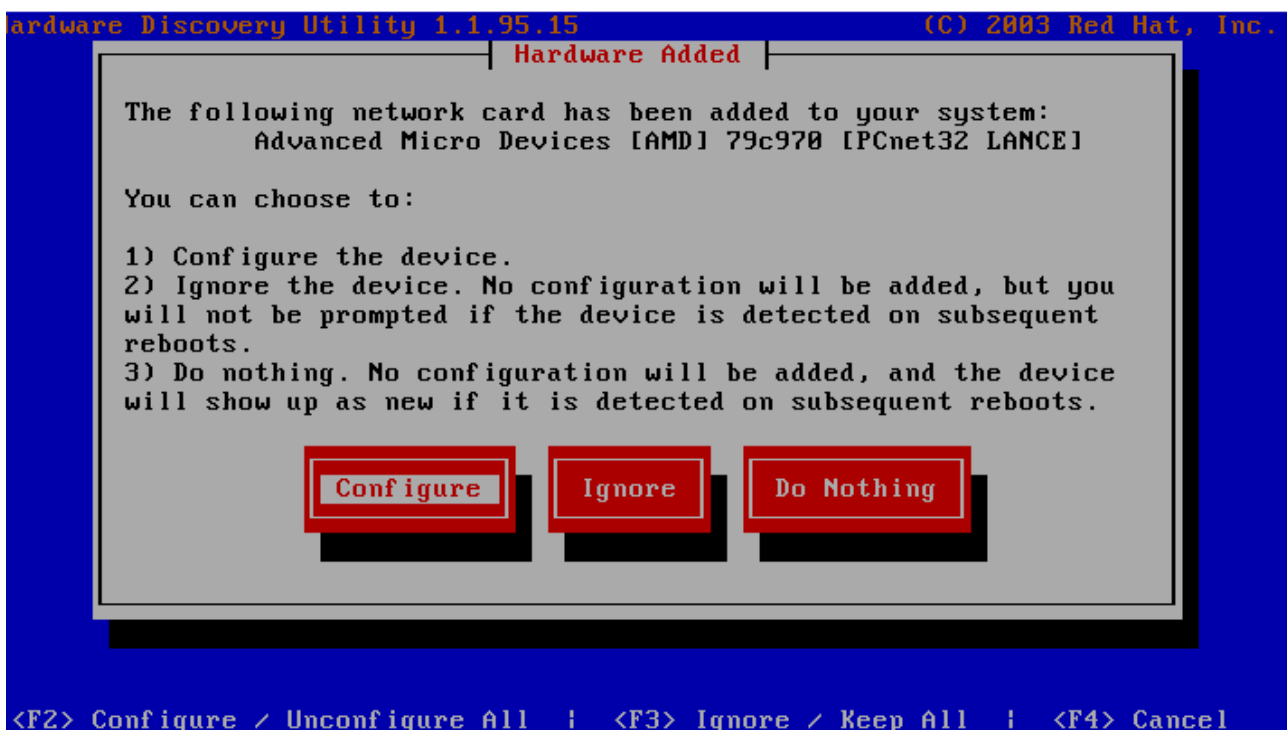
During the start-up sometimes a new network device will be detected.
If such is the case, then click into the screen, and press enter.



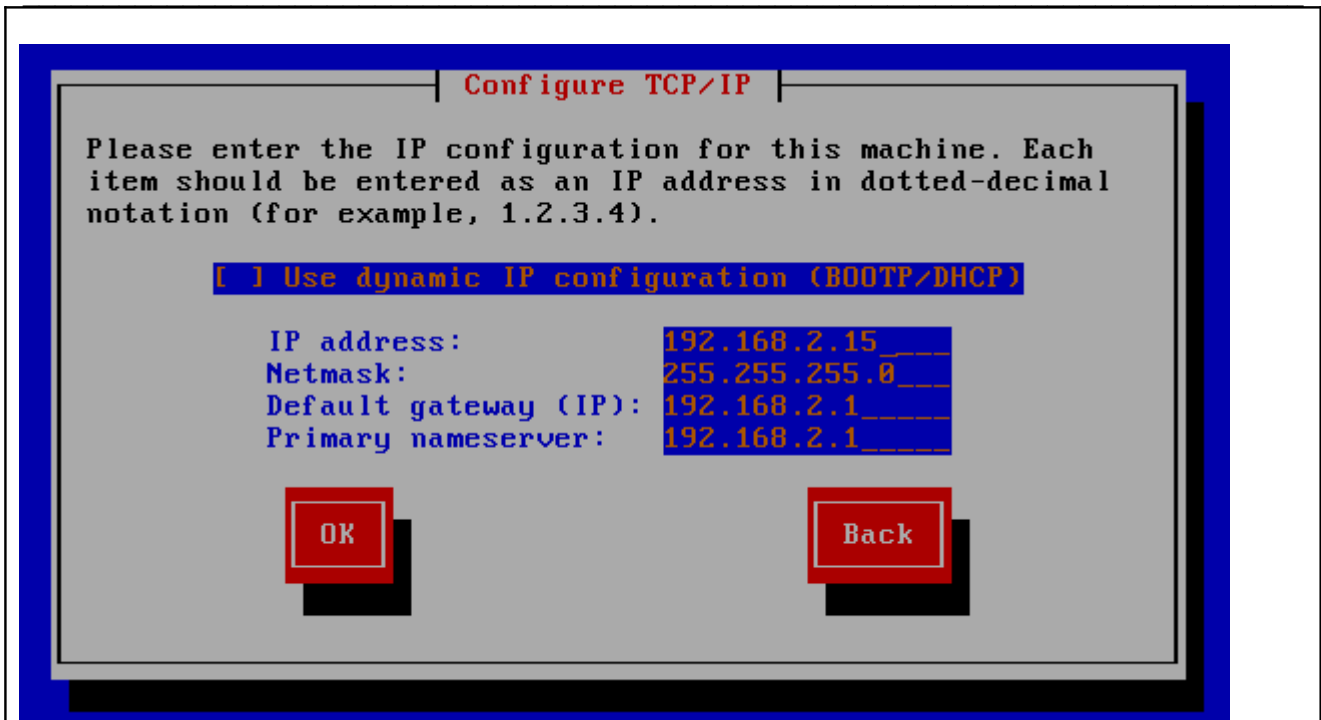
Hereafter select the Remove button:



Next press configure:



APPS Release12 on Vmware (32Bit) User manual



.....and use the parameters as described in the screenshot.

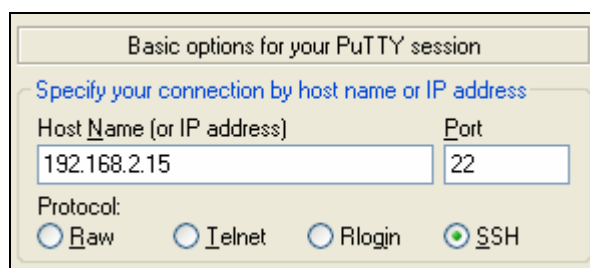
Of course you are free to choose a free ip address in your network.

If this is the case, you can configure the parameters in such a way that it is suitable for your environment. Don't forget to use the same ip address in your host file (As described in Section 3, installation of the VM-ware server.)

If – for some reason – this did not work well, then you must switch to the x-environment to adjust the network parameters.(See **section 8:Network settings in the X environment** for the details).

Open a Linux shell:

You can either log onto the VMware console, or use a program which is able to setup an ssh connection (like putty)



Log into the system and change the directory to the scripts directory:

```
login as: oracle
Sent username "oracle"
oracle@192.168.2.15's password:oracle1234
Last login: Tue Jan 22 21:25:01 2008
[oracle@vision ~]$
```

APPS Release12 on Vmware (32Bit) User manual

Check if you are in the right directory:

```
[oracle@vision ~]$ pwd  
/home/oracle
```

Go to the scripts directory:

```
[oracle@vision ~]$ cd scripts
```

Start APPS release 12:

```
[oracle@vision scripts]$. /start_all
```

NOTE: This will start the database and the application tier

Login to the application:

Use the url: <http://vision.testinstance.com:8000> in a web browser, and you will receive the welcome screen. (This can take a few minutes, when you start-up for the first time after a shutdown)

Stop APPS release 12:

```
[oracle@vision scripts]$. /stop_all
```

NOTE: This will stop the application tier first followed by the the database.

It will take some time before the concurrent managers are stopped, and before the database has been stopped.

If the database does not shutdown, (i.e. the database is still shutting down after 15 minutes) follow next step "Stop the database forced".

Stop the database forced:

Load the right environment:

```
[oracle@vision 10.2.0]$ cd /d01/oracle/VIS/db/tech_st/10.2.0
```

```
[oracle@vision 10.2.0]$ . VIS_vision.env
```

```
[oracle@vision 10.2.0]$ sqlplus
```

SQL*Plus: Release

Enter user-name: / as sysdba

Connected to:....

```
SQL> shutdown abort
```

```
SQL> startup restrict
```

```
SQL> shutdown immediate
```

If the database has been stopped you can shutdown the operation system, as described in the following section: "shutdown the operation system"

Shutdown the operation system:

Become super user first:

```
$ su
```

```
password: vision1234
```

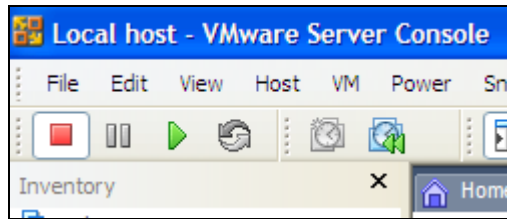
give the shutdown command:

```
#!/sbin/shutdown -h now
```


APPS Release12 on Vmware (32Bit)

User manual

Stop VMware:



Press the RED stop button

6. Oracle EBS documentation

The Oracle EBS documentation can be found on: download.oracle.com

Some interesting technical documents are listed below:

Technology

Maintenance

Oracle Applications Installation Guide: Using Rapid Install	B31295-02
Oracle Applications Maintenance Procedures	B31569-01
Oracle Applications Maintenance Utilities	B31568-01
Oracle Applications Patching Procedures	B31567-01
Oracle Applications Upgrade Guide: Release 11i to Release 12 (zipped)	B31566-01

Architecture

Oracle Applications Concepts	B31450-01
Oracle Applications Flexfields Guide	B31456-01
Oracle Applications Multiple Organizations Implementation Guide	B31183-01
Oracle Trading Community Architecture Administration Guide	B25894-01
Oracle Trading Community Architecture Reference Guide	B25896-01
Oracle Trading Community Architecture Technical Implementation Guide	B25895-01
Oracle Trading Community Architecture User Guide	B25893-01
Oracle XML Publisher Administration and Developer's Guide	B31412-01
Oracle XML Publisher Report Designer's Guide	B31410-01

Reference

Oracle Applications System Administrator's Documentation Set	NA
Oracle Applications System Administrator's Guide - Configuration	B31453-01
Oracle Applications System Administrator's Guide - Maintenance	B31454-01
Oracle Applications System Administrator's Guide - Security	B31451-01
Oracle Applications Supportability Guide	B31457-01
Oracle Applications User's Guide	B31442-01

APPS Release12 on Vmware (32Bit)

User manual

7. TNSNAMES

```
VIS12 =  
(DESCRIPTION =  
  (ADDRESS =  
    (PROTOCOL = tcp)  
    (HOST = VISION.testinstance.com)  
    (PORT = 1521)  
  )  
  (CONNECT_DATA =  
    (SERVICE_NAME = VIS)  
    (INSTANCE_NAME = VIS)  
  )  
)
```

APPS Release12 on Vmware (32Bit)

User manual

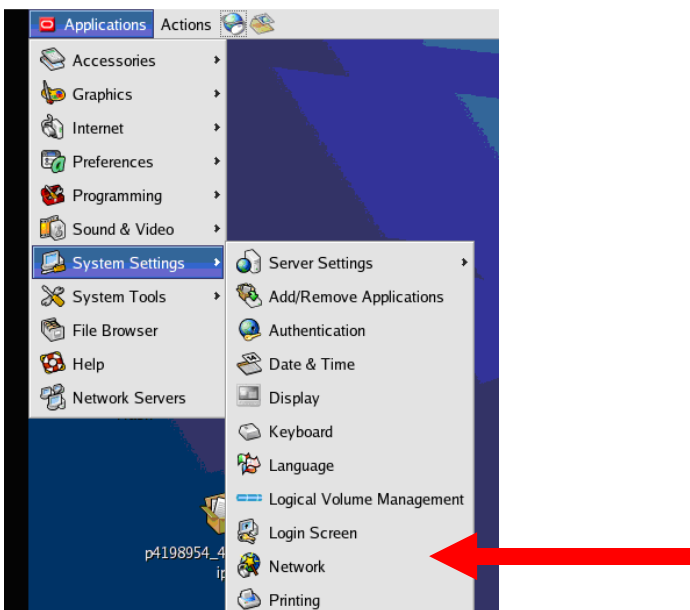
8. Network settings in the X environment

```
Enterprise Linux Enterprise Linux AS release 4 (October Update 4)
Kernel 2.6.9-42.0.0.1.EL on an i686

vision login: root
Password:
Last login: Sun Feb  3 12:08:08 on tty1
You have new mail.
[root@vision ~]# startx_
```

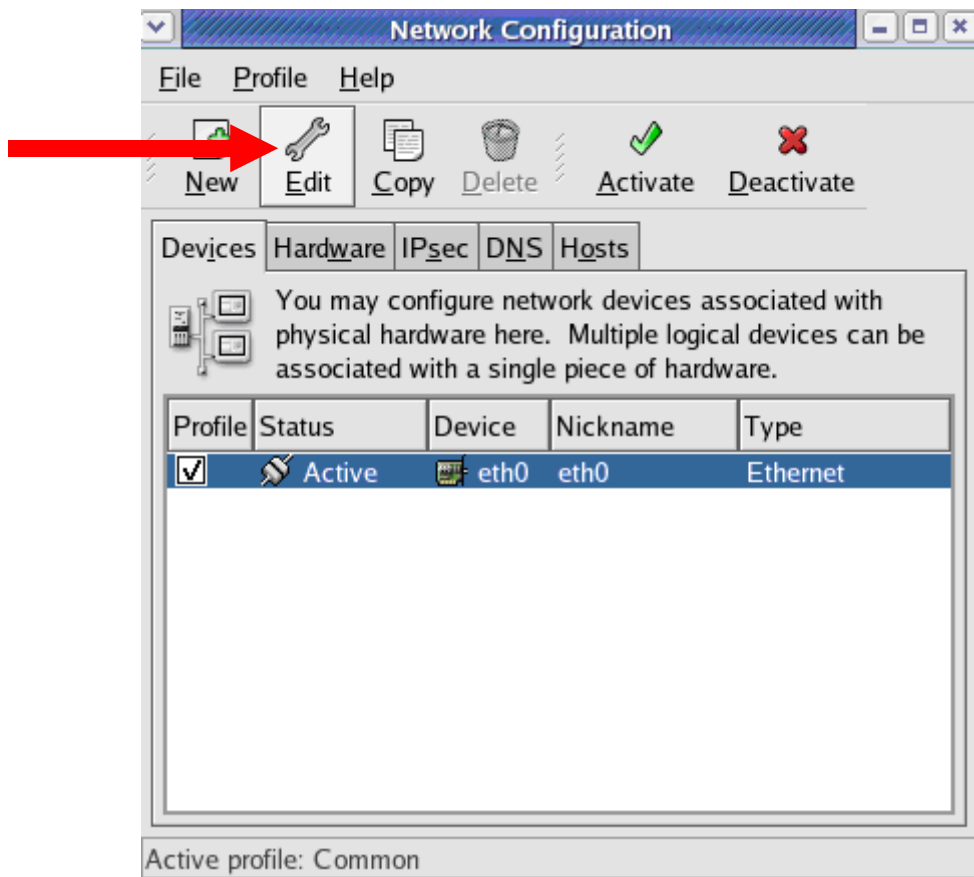
Login as root

The X environment can be started by entering “startx”

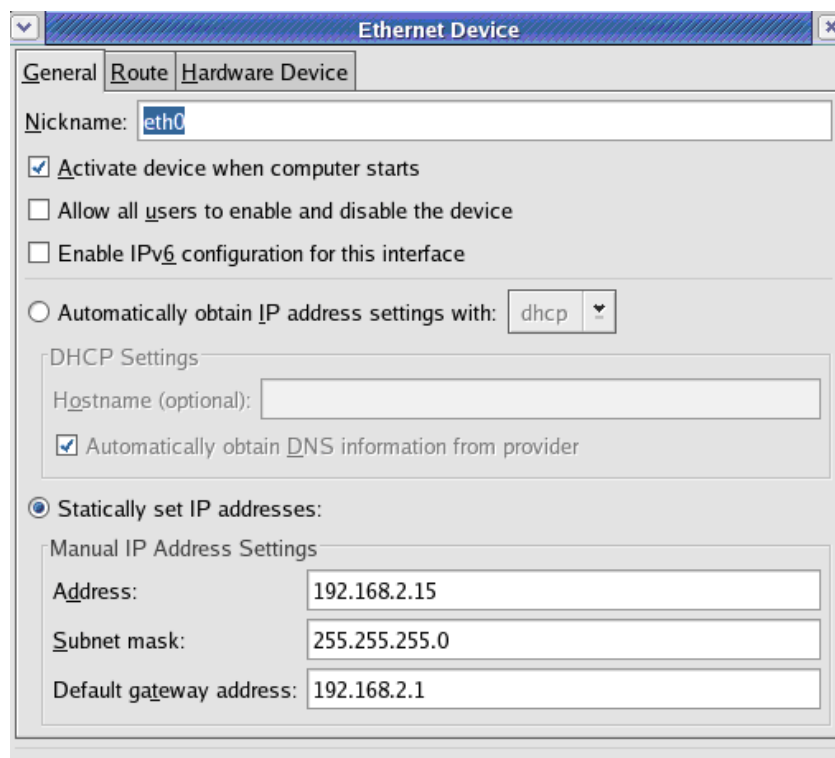


Select Network

APPS Release12 on Vmware (32Bit) User manual

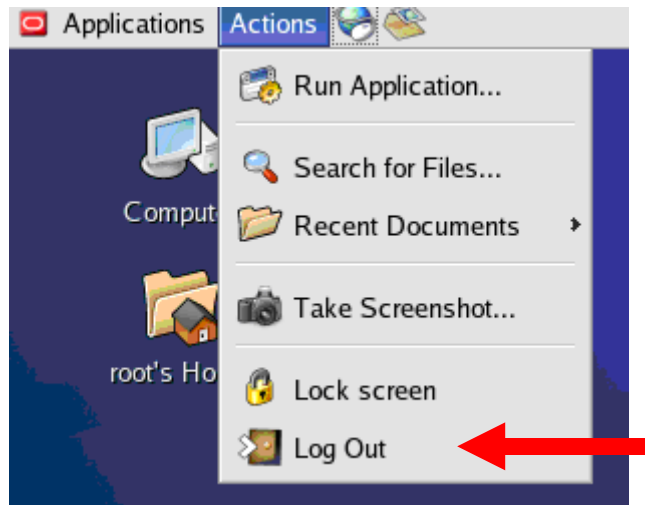


Select Edit, and configure the IP address:



APPS Release12 on Vmware (32Bit)

User manual



Leave the X environment, by pressing the logout button.

For more information about our various Oracle Applications services please contact us via:

ICT-OKE BV	Altasen BV
Van Hovedreef 18 4715 GH Rupchen The Netherlands www.ict-oke.com email: info@ict-oke.com	Billitonlaan 4 7314 CP Apeldoorn The Netherlands www.altasen.com email: info@altasen.com

NOTE: We are able to deliver a completely installed system with the language of your choice on release 11.5.10CU2 or release 12!!.

Siebel 8 for Linux will be available in the near future.

INFORMATION DISCLAIMER

This document which is available from ICT-OKE.COM does not warrant or assume any legal liability or responsibility for the accuracy, completeness, or usefulness of any information or process disclosed.

Although we intend to keep this information current, we do not promise or guarantee that the information is correct, complete, or up-to-date. While ICT-OKE BV will make every effort to ensure that the information in these pages is accurate, up-to-date and complete, no liability on the part of ICT-OKE BV (or its employees or agents) will be accepted for any inaccuracies.

*The document is published for free as a favor to all colleague Oracle APPS DBA's and Consultants.
Please do not change the contents of this document without letting us know.*